

FACADES, SAFETY AND  
INTERIOR DESIGN MADE  
OF METAL FABRICS



# SAFETY MADE OF METAL MESH

BALUSTRADES | ROLLER SHUTTERS | FALL GUARD PROTECTIONS









# SAFETY MEETS DESIGN

All balustrade applications by GKD focus on two key aspects: design and safety. Whether you choose individually designed balustrades with GKD metal mesh or prefer our SAFEMESH modular system, you are sure to create visual and functional highlights in your building concept.

The use of various mesh types always allows a perfectly tailored solution to be found for individually designed balustrades. Our flexible meshes easily follow the gradient of staircases.

With our SAFEMESH balustrade system, we also offer a complete system that comprises metal fabric panels with external frame, point fittings, posts and handrails. The exceptional aesthetics, coupled with reliable safety, minimum care/maintenance and rugged durability, make SAFEMESH the ideal alternative – both for new buildings and renovation projects. The system has been successfully tested as per the Uniform Technical Building Regulations Directive (ETB) for fall protection applications.

---

## ADVANTAGES AT A GLANCE:

- Durable and low-maintenance thanks to the use of stainless steel 1.4404
  - High-grade design with a variety of mesh types
  - Degree of transparency as required
  - Robust
  - Suitable for indoor and outdoor applications
  - Individually designed or as a complete SAFEMESH GKD system
- 



*Title + image 4: The Art Institute of Chicago, Illinois, architect: Renzo Piano, France, mesh: PC-Tigris, ©GKD/Apple Group*

# SAFELY ENCAPSULATED IN METAL MESH

Roller shutters made of GKD metal mesh impress with both their aesthetics and functionality. They effectively protect segregated areas from unauthorised access and can be used primarily as a visual access barrier. The optimised lateral guides ensure that the grid sections slide down smoothly. All roller shutters made of GKD metal mesh are motorised and can be operated fully automatically or individually. In addition to this, the low-maintenance motors are easy to connect to

all common building management systems. Depending on the model chosen, the systems are suitable for indoor or outdoor use. Thanks to their transparent appearance, our GKD metal meshes grant a view of the areas they cover and thereby help create an overall sense of space. A matched lighting concept allows these transparent aesthetics to be emphasised even more. The degree of transparency can be individually defined based on the density of the mesh used. As a system



Roller shutter in a canteen, Münster, architect: Vervoorts & Schindler Architekten, Bochum, mesh: Tigris, ©GKD/Holtkötter

supplier, we support our customers from the initial concept phase, through the design phase and weaving process, all the way up to delivery and installation of our roller shutters made of GKD metal fabric. As they employ corrosion-free stainless steel, these systems are easy to clean using standard commercial non-abrasive cleaners. Despite the fact that they move effortlessly, the roller shutters made of GKD metal mesh are solid and durable building components.

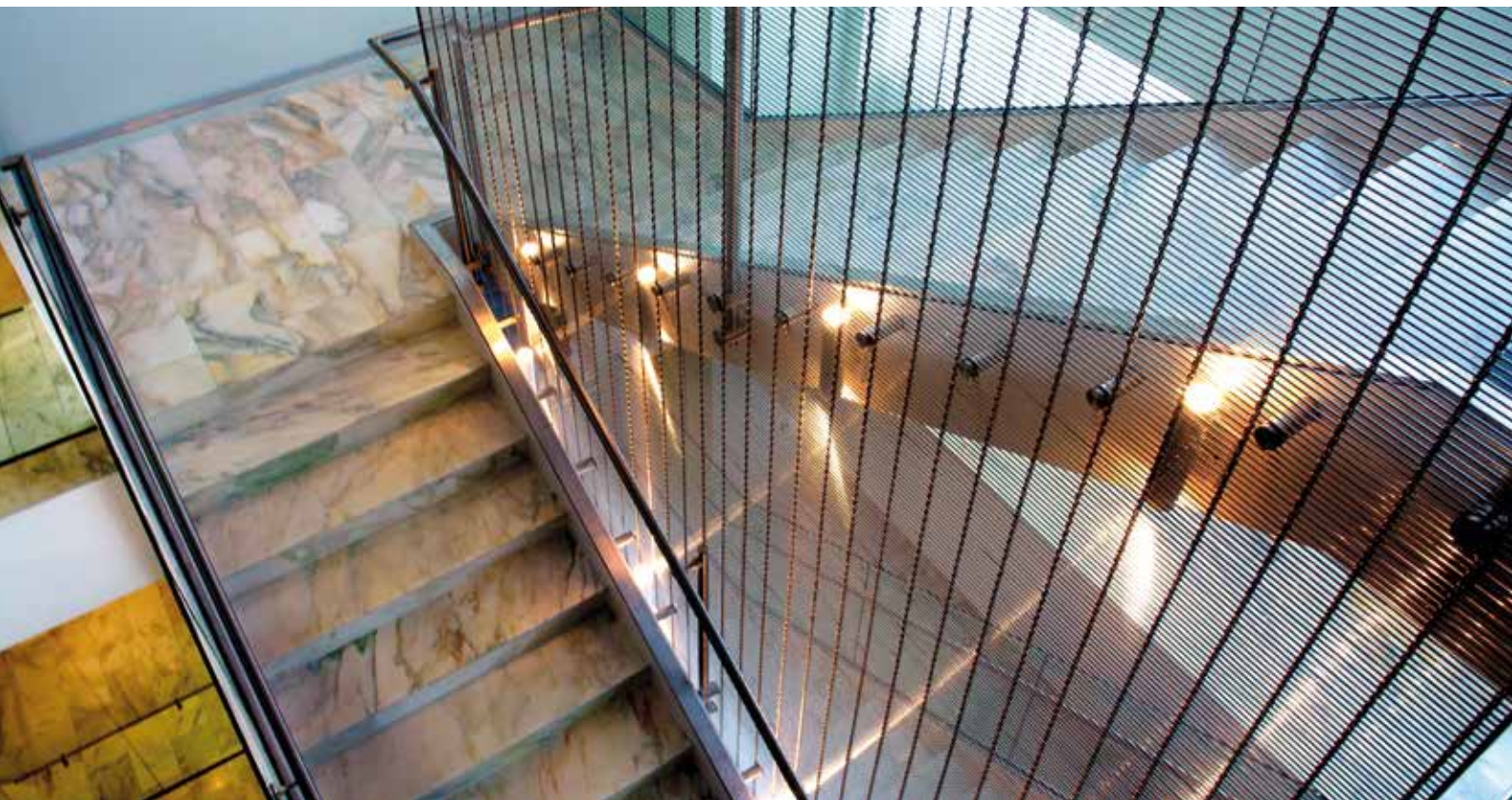
---

**ADVANTAGES AT A GLANCE:**

- Ideal for shops, bars and restaurants
  - Various mesh types
  - Degree of transparency as required
  - Widths of 1 to 8 m and a maximum height of 4 m
  - Suitable for indoor and outdoor applications
- 







Images 1-3: Phelps Dunbar, Baton Rouge, Louisiana, architect: Gensler, mesh: Futura 3110, ©GKD/Shannon Sheridan



# WOVEN PROTECTION FOR MODERN STAIRCASES

Whether as an enclosure or tensioned in the centre of a stairwell, stainless steel meshes from GKD offer protection and safety for both indoor and outdoor staircases. With a width of up to 8 m and tensioned over several floors, the meshes offer protection over a large area without any annoying joints. In the process, different mesh types meet various requirements with regard to transparency and robustness. Due to their structure, the metal fabrics can be shaped in cable direction and are even capable of cladding circular building structures virtually seamlessly. With tailor-made fastening solutions, the mesh panels are optimally integrated into the building structure, thereby creating a high-grade, protective shell.



---

## ADVANTAGES AT A GLANCE:

- Can be manufactured with widths up to 8 m
  - High-grade design with a variety of mesh types
  - Degree of transparency as required
  - Straight or curved cladding possible
  - Individual fastening solutions
  - Robust
  - Suitable for indoor and outdoor applications
- 



**GKD - GEBR. KUFFERATH AG**

Metallweberstraße 46  
52353 Düren  
Germany  
T +49 (0) 2421 803 - 0  
F +49 (0) 2421 803 - 227  
metalfabrics@gkd.de  
www.gkd.de

**GKD - GEBR. KUFFERATH AG**

As a privately owned technical weaver, GKD-Gebr. Kufferath AG is the world market leader in metal, synthetic and spiral mesh solutions. Four independent business divisions bundle their expertise under one roof: **INDUSTRIAL MESH** (woven metal mesh and filter solutions), **PROCESS BELTS** (belts made of woven mesh and spirals), **METALFABRICS** (façades, safety and interior design made of metal fabrics) and **MEDIAMESH®** (transparent media façades). GKD continuously develops new fields of application through its manufacturing technology and process expertise. We use GKD meshes to create efficient systems, equipment and components that are perfectly integrated into our customers' processes across all industrial sectors. GKD is active on the international stage from its headquarters in Germany, five further production sites in the US, South Africa, China, India and Chile, as well as branches in France, Spain, Dubai and representatives all over the world.

**BUSINESS UNIT: METALFABRICS**

With top quality metal fabrics and design mesh, GKD combines aesthetics with function, experience with innovation. Whether custom metal fabrics or standardized system components, planners and architects have been benefiting from our creative impulses and technical innovations for more than 20 years – also in internationally outstanding architectural projects. The design options in terms of shapes, colors and surfaces ensure unique façade designs. Building shells become energy-efficient solar protection systems that can be adjusted for different times of the day. Bright LED media façades display high resolution content. Sound-absorbing ceiling systems improve room acoustics, while semi-transparent room dividers help structure interior designs. Roll-up doors offer effective burglary protection. GKD's diverse product portfolio offers the right solution for a very wide range of architectural applications.

**CLOSE TO THE MARKET AROUND THE GLOBE.**

- ① GKD GERMANY, Düren (headquarters)
- ② GKD FRANCE, La Roque d'Anthéron, Croisilles
- ③ GKD SPAIN, Barcelona
- ④ GKD USA, Cambridge, MD
- ⑤ GKD LATIN AMERICA, Santiago de Chile
- ⑥ GKD SOUTH AFRICA, Randfontein
- ⑦ GKD INDIA, Jaipur
- ⑧ GKD CHINA, Beijing, Qufu
- ⑨ GKD MIDDLE EAST, Dubai

